



Datto Networking

Get Connected, Stay Connected

STAY AHEAD OF THE COMPETITION WITH DATTO NETWORKING

In today's hyper-competitive, increasingly global economy, small to medium sized businesses (SMBs) are faced with more communication, logistical and system challenges than ever before. The technology landscape is ever changing, and many SMBs find they are ill equipped to keep up. At the center of it all, these systems are completely reliant on the network. When the network is up, everything's fine. However, business suffers when there are connectivity problems.

Without network and Internet access, productivity grinds to a halt and revenue is lost. Frequently, SMBs lack the requisite IT skills to deploy a network themselves, so they must hire outside help. Typically, this means an IT provider installs the network equipment as a project and then they're done—until something goes wrong and they lose connectivity. That is when the SMB needs the expertise of a skilled managed services provider (MSP). And that is when the MSP needs a networking product line that delivers.

Powerful Hardware

Datto Networking delivers advanced hardware for today's complex networking environments, and includes options that scale as business needs change.

Performance

The Datto Networking Appliance incorporates an eight Core 2.4GHz Intel processor, 8 GB DDR3, 32 GB Industrial Compact Flash drive, six built-in 10/100/1000 Ethernet Ports and fully integrated, multi-band, Cat4 Radio. Datto Networking Switches come in 8, 24 or 48 port options with PoE+ (802.3af/at) included on all ports (PoE budgets range from 55W to 740W). Datto Networking WiFi access points are fully mesh enabled, and deliver powerful WiFi featuring dual band simultaneous 2.4GHz/5GHz, up to 3x3 configurations on wireless N or AC, Wave 1 or Wave 2, Gigabit Ethernet, standard 802.3af PoE and more. Datto Networking hardware was built for performance.

MSP-Optimized

You've determined that an MSP is your best option for IT service delivery, and that makes sense. An MSP has the skills and expertise to keep your business and your network up and continually running.

Datto Networking was purpose-built for delivery by an MSP. That means that we have included specific hardware capabilities and software features that streamline how your MSP delivers networking. These capabilities mean the MSP is more efficient, enabling them to deliver and optimize your network according to your specific needs. And they don't need to unnaturally alter their business to do so. That's what MSP-Optimized networking is all about. It's seamlessly fitting in to your MSP's business model so your MSP can focus completely on solving your business problems.

Network Continuity

Network Continuity from Datto Networking delivers seamless, uninterrupted, always connected network operation with fully integrated 4G LTE failover and failback, always available cloud management, seamless WiFi roaming, self-healing capabilities, hardened security and built-in safeguards designed to ensure maximum uptime.

In business, network connectivity can determine who wins and who loses. It can be the difference between servicing customers or frustrating them to no end. Businesses can't afford to be offline. Datto Networking's always connected, high performance networking products provide businesses with peace of mind, and the confidence that the network will be there when they need it.



Managed Networking

Most SMBs are totally reliant on their network to conduct business operations. Without network and Internet access, productivity grinds to a halt and revenue is lost. So if the network is critical to your business, why would you accept the risk of network downtime?

That's where Datto Networking comes in. The entire product line is purpose-built for IT managed service providers to deliver networking to small to medium sized businesses. Our solutions are designed to keep your business up and running even if your ISP has an outage.

SMB Performance

However, managed networking isn't only about avoiding downtime. You don't want a network that "just works." That's setting the bar too low—SMBs need high performance network and WiFi solutions. They need Datto Networking.

With Datto Networking, managed service providers can design a network that ensures the best possible performance for all of your employees. For example, upon installation, our access points work together to form a self-organizing, self-healing, encrypted mesh network with WiFi roaming automatically enabled. This built-in feature combined with the knowledge and expertise of a Datto Networking partner ensures your employees will have seamless coverage across the entire workplace.

It's Gotta be Secure

You've no doubt heard by now that cybercrime is on the rise. It's gotten to the point that criminals don't even need technical acumen to conduct attacks—ransomware as a service has emerged, allowing just about anyone to extort money from victims. You may have also heard about Krack, a recently exposed security exploit that, in theory, could be used by hackers to access sensitive business data via your WiFi network. With Datto Networking's secure product offerings, managed service providers can ensure your network is secure, protecting your business against these types of threats and more.

Datto Networking incorporates advanced security features to ensure continuity across the entire network. With fully integrated Layer 2 protocol analysis and Intrusion Detection & Prevention (IDP), Datto Networking supports client VPN (using IPSec IKEv2), site-to-site VPN, signature based rule files, web filtering, whitelisting and ad blocking. The built-in firewall with stateful packet inspection supports port forwarding, DMZ Host and built-in connection logic. The end result is a secure network managed by an MSP focused on keeping your business up and running.

Future Proof

Out of the box, Datto Networking delivers multi-WAN support, managed in the cloud, facilitating network growth when needed. Every port on the 8, 24 or 48 port Datto Networking Switches comes equipped with built-in PoE+ (802.3af/at), increasing expansion opportunities, even when power options are not readily available. And the Datto Networking Appliance's fully integrated 4G LTE failover and failback enables always connected Internet so that your business can keep running even when you lose your primary ISP connection. We build our hardware to perform. And, we build our hardware to last.

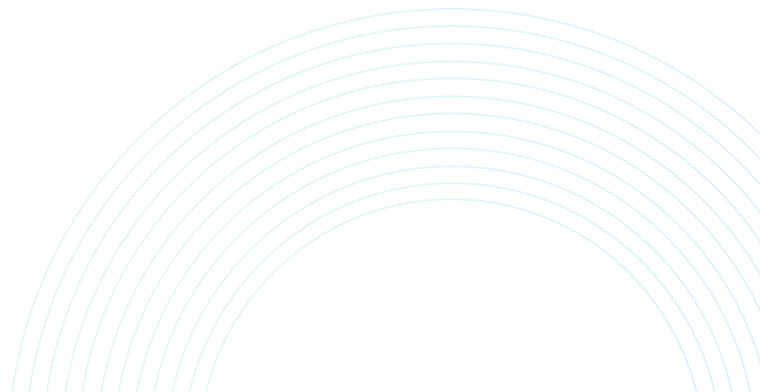
With Datto Networking you won't need to swap out your hardware just to implement new features. You see, we're in this for the long haul. That's why we continually develop and deliver new features through firmware updates. That's why we have more than 115,000 networks deployed and managed in the cloud and more than 32 million connected devices every month. That's why Datto Networking is a product line designed to deliver high performance networking that will grow and evolve with you and your future business needs.

Reduced Network Downtime

Because Datto Networking was purpose-built for delivery by a managed services provider, all management and monitoring functions were designed for the MSP to quickly and efficiently troubleshoot any issues. In fact, your MSP can often see things that are causing your network problems, many times before you even know a problem exists. That translates into less downtime and better network performance.

Mesh Technology

As soon as you plug them in, Datto Networking WiFi access points self-organize into a self-healing, encrypted mesh network with seamless roaming WiFi automatically enabled. Since the beginning, we've recognized what mesh can mean for improved WiFi performance. For example, mesh enables WiFi expansion into physical locations where cabling options are limited. Or, mesh enables WiFi continuity, the ability for an access point to automatically communicate with other APs on the network (self-healing) even when the ethernet cable is cut or damaged. The end result is smarter, simpler mesh-enabled WiFi resulting in better WiFi performance.





IT'S ABOUT THE EXPERIENCE.

ADDING CONNECTIVITY

THROUGH THE DATTO ACCESS

POINTS HAS REALLY MADE US

A WORLD-CLASS FACILITY.”

Clay Whittlesey

Director of Events,
Fargo Parks District

A Legacy of Networking Expertise

For more than ten years, the products that comprise Datto Networking have been deployed around the world. With over 115,000 active networks and more than 32 million connected devices every month, Datto Networking brings this longstanding legacy of networking expertise to the MSP channel.

Why Haven't You Heard of Datto?

Datto is a channel only company. That means we only sell our products through our channel of MSP partners. We don't sell direct. That means you won't be able to go online and buy Datto Networking without working with one of our partners. And we do that for good reason.

You see, managing a network requires a lot of skill and technical expertise. Our MSP partners have this skill and technical expertise. Managing a network requires a proactive approach to monitoring your business. Our MSP partners have this proactive approach. Deploying a network requires experience and knowledge to ensure you get the networking products that best suit your business' requirements. Our MSP partners have this experience and knowledge.

So we choose to sell through this highly skilled channel in order to ensure you (the SMB) are getting the best out of our products. Why haven't you heard of Datto? Because you aren't our customer. Your MSP is. But aligning yourself with a Datto Networking partner means you are aligning yourself with the best. It means you are ensuring your network will perform to very high standards. It means your network will work.

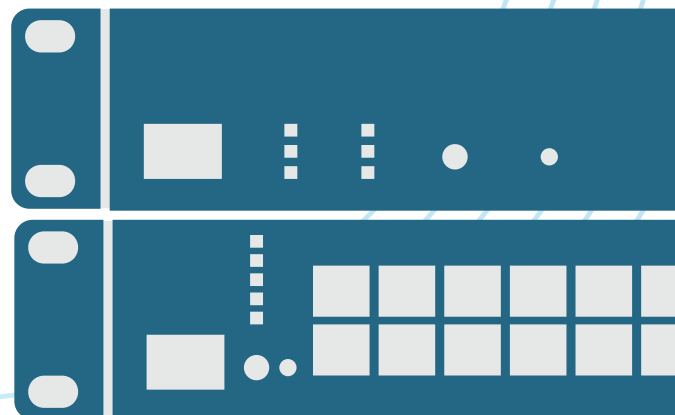
Cloud Management Started Here

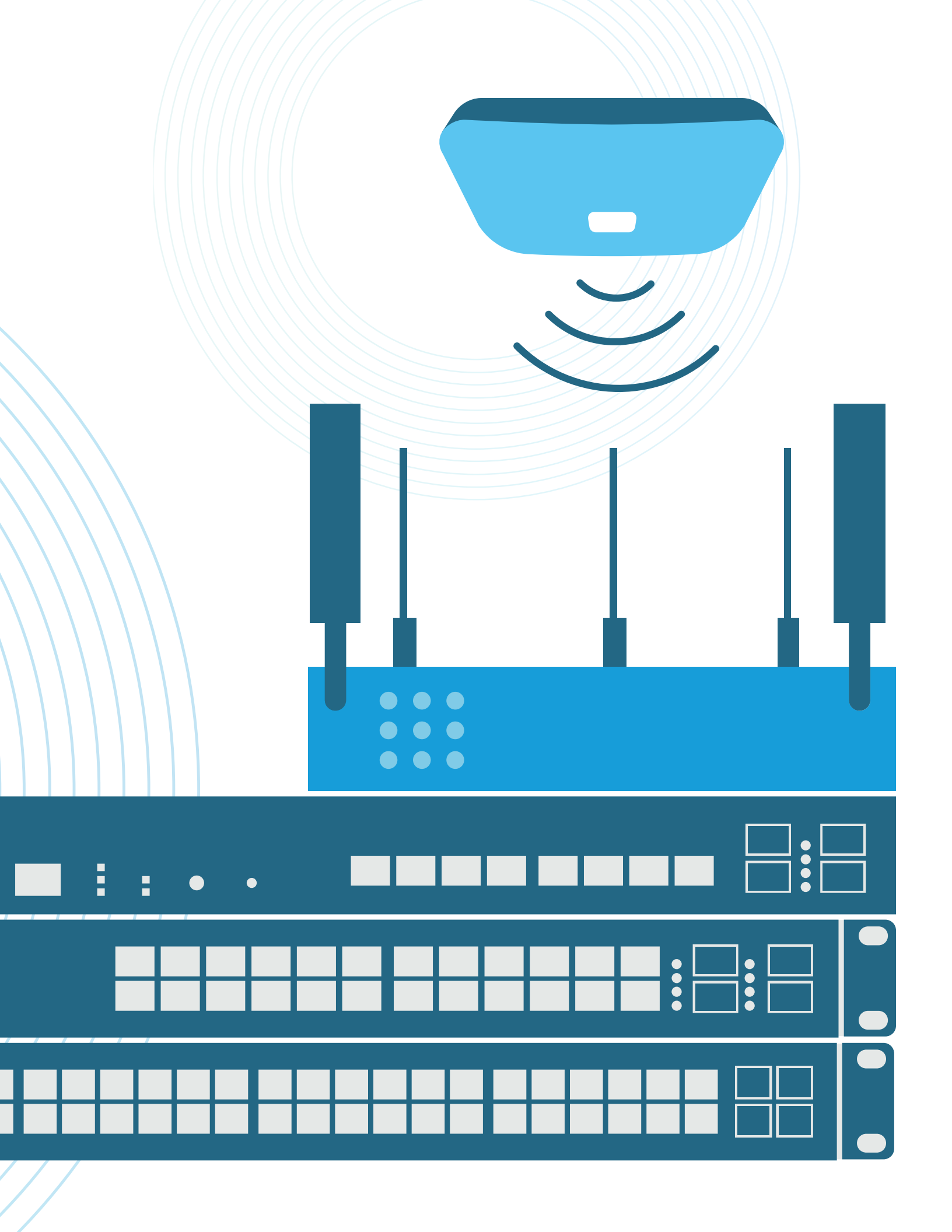
Today, cloud management for networking has become table stakes, even though there are still a few industry laggards. Did you know that from the very beginning, the technology behind Datto Networking has been in the cloud. In fact, one of the very first networking cloud management interfaces was written by our own Michael Burmeister-Brown. You see, we recognized from the very early days of WiFi and networking that cloud management was critical. Cloud management simplifies things, and enables remote deployments and troubleshooting. And when your MSP needs to manage or monitor your network, you want them to do so remotely. Every time they have to come to your office, it costs you money. So we have been cloud managed from the very beginning. It just makes good business sense.

DATTO NETWORKING PRODUCTS

Built for Performance

Datto Networking's intuitive products deliver advanced networking features for today's complex networking environments, and include options that scale as business needs change.





Datto Networking WiFi

Not too long ago, WiFi for business was rare. Then came the IEEE 802.11n standard, and things changed. Today, WiFi is everywhere, and small to medium sized businesses are right in the middle of it.

The current standard is 802.11ac Wave 2. Now, if you don't understand what Wave 2 means, that's ok. What you need to know is that it is faster and can handle more connections than any previous standard. Wave 2 is what has the potential to turn your mediocre WiFi into really good WiFi. And your quickest path to getting there is through your MSP.

Universal Mounting Options

Datto Networking access points are designed to be deployed in virtually any environment. With an operating temperature range starting at -20°C up to 50°C, harsh cold or heat are not a problem. And with an IP55 rating, the APs can be installed indoors or outdoors, and can even handle dust and rain. You see, we designed the Datto access points so that your MSP can ensure the best and most broad wireless coverage any SMB might need.

Powerful WiFi

WiFi networking should always be available, accessible throughout your office, and seamless to every user. That's why Datto Networking WiFi access points deliver powerful, seamless roaming for always connected WiFi. With options ranging from 3 x 3 802.11 ac to our newest Wave 2 models, you will experience powerful WiFi, backed by your MSP and the team at Datto.

Self-Healing Mesh

All Datto Networking access points are mesh enabled and get their power from PoE+ (802.3af/at). Access points work together to form a self-organizing, self-healing, encrypted mesh network with seamless WiFi roaming automatically enabled. That means no more dead spots. It's WiFi continuity, wherever it's needed.



AP60

Universal 802.11ac Cloud-Managed
WiFi Access Point

AP42

Universal 802.11ac Wave 2
Cloud-Managed WiFi Access Point

Wireless Specs & Capacity	AP60	AP42
Bands	2.4GHz + 5GHz	2.4GHz + 5 GHz
Wireless connectivity	802.11a/g/n/ac Wave 1 2.4GHz 3x3, 5GHz 3x3	802.11a/g/n/ac Wave 2 2.4GHz 2x2, 5GHz 2x2
Speed (rated)	2.4GHz - 450 Mbps 5GHz - 1300 Mbps	2.4GHz - 300 Mbps 5GHz - 867 Mbps
Range (approximate)	75' - 150' indoor (3-4 walls) 400' - 600' outdoor	75' - 150' indoor (3-4 walls) 400' - 600' outdoor
Max users (recommended)	60-120 per AP	50-100 per AP

Features	AP60	AP42
Cloud Management	Built-in cloud management (no onsite controller/management appliance required), WPA/WPA2 Personal and Enterprise, captive portal/splash pages, Facebook Wi-Fi, user management capabilities, and much more.	
Automatic Firmware Upgrades	Yes	Yes
Automatic Feature Upgrades (future-proofing)	Yes	Yes
Zero config plug and play	Yes	Yes
Self-forming, self-healing Mesh	Yes	Yes
Seamless roaming	Yes	Yes
Wireless LAN	4 SSIDs, bridge to LAN, bridge to VLAN (tagging), Public & Private SSIDs	

Hardware & Environmental	AP60	AP42
Warranty	3 Year Advanced Replacement	
Mounting	Installation kit included: t-rail ceiling, solid ceiling or wall, ethernet jack, outdoor wall/pole	
Ethernet/LAN	2 x Gigabit	2 x Gigabit
PoE	Standard 802.3af	Standard 802.3af, Passive 18-24V (mode A, B, A+B)
CPU	Qualcomm Scorpion QCA9558	Qualcomm Dakota IPQ4018
Memory	128MB DRAM DDR2	256MB DRAM DDR3
LED Indicators	Nine-color LED status indication	Nine-color LED status indication
Hardware watchdog	Yes	Yes
Antennas	Internal - 3 dual-band	Internal - 2 dual-band
USB (future expansion)	Yes	Yes
Indoor/Outdoor Rating	CE Marked for Indoor/Outdoor Use, IP55	
Certifications	EN 60950-1, EN 55032, EN 62311 (SAR & MPE), UL 60950-1, cUL 60950-1, EN 300.328, EN 301.489-1 and EN 301.489-17, EN 301.893, RCM, C-Tick 4268(2.4G) +C-Tick 4268 (5GHz), C-Tick 3548, ICES-003, IC RSS-247(2.4G) + IC RSS-246(5GHz), FCC Pat 15 B, C, E	
Operating Temperature	-20° to 50° C (-4° to 122° F)	-20° to 50° C (-4° to 122° F)
Size	169.9mm x 169.9mm x 30.48mm (6.69" x 6.69" x 1.2")	169.9mm x 169.9mm x 30.48mm (6.69" x 6.69" x 1.2")

Datto Networking Switches

Datto Networking Switches seamlessly connect devices and users on the network, enabling users to work smarter and faster. The switches include robust Layer 2 management features including line rate switching, link aggregation, port mirroring/trunking, STP, IGMP snooping, VLAN, port security, storm control, port isolation, attack prevention, ACL, SNMP, and more.

With five models spread across two series (L Series and E Series), Datto switches deliver plug-and-play integration with Datto Networking access points, simplifying how your MSP deploys and manages your network. With simpler networking designed for your MSP, you will experience better performance, reduced downtime and the right networking capabilities for your specific business needs.

Proactive Monitoring

Datto Networking Switches are remotely managed by your MSP. This means your MSP can better monitor and proactively manage your network and all of the connected devices, including the ability to remotely enable, disable or power cycle ports. Your MSP will have visibility into any IP device's power consumption on a per port basis or across all connected devices. This increased visibility enables your MSP to proactively head off any potential problems, including external security threats. And that delivers peace of mind for you and your business.

Designed to Fit

With 8, 24 or 48 port options, and PoE budgets ranging from 55W all the way up to 740W, Datto Networking Switches are designed to accommodate virtually any sized network configuration a small to medium sized business might need. And expanding a network has never been easier. Your MSP can quickly add new switches or APs when your growth demands it. And upon installation, your switches work seamlessly with Datto access points to create a seamless roaming WiFi network. The result is always connected networking backed by your MSP and the team at Datto.



L Series Switches

E Series Switches

Ports and Capacity	L8	L24	E8	E24	E48
10/100/1000Mb Ports	8	24	10	24	48
SFP Slots	N/A	2 (1Gb)	2 (1Gb)	4 (1Gb)	4 (1Gb)
PoE Capable Ports	Ports 1-8 output up to 30W	Ports 1-24 output up to 30W	Ports 1-8 output up to 30W	Ports 1-24 output up to 30W	Ports 1-48 output up to 30W
PoE Budget	55W	250W	150W	370W	740W
Switching Capacity	20Gbps	52Gbps	24Gbps	56Gbps	104Gbps

Features	L8	L24	E8	E24	E48
Cloud Management	No onsite management appliance required, automatic firmware upgrades, automatic future-proofing via new and upgraded features				
Layer 2 Features	802.1Q VLANs, Port Trunking/802.3ad Link Aggregation, Port Mirroring, Auto-detect uplink port, QoS (802.1p/CoS, DSCP), Port Isolation, IGMP Snooping, Rate Limiting (Tx/Rx), Flow Control, LLDP, MAC ACLs, IPv4 ACLs, Jumbo Frames				
Spanning Tree Protocol	802.1D Spanning Tree (STP), 802.1w Rapid Spanning Tree (RSTP), 802.1s Multiple Spanning Tree (MSTP)				
QoS (Quality of Service)	802.1p/CoS, DSCP				
PoE Management	Power on/off per port, Power class configuration, Power feeding with priority, User defined power limit				
VoIP Phone System Support	QoS, Voice VLAN + OUI list, LLDP-MED				
Integration Support	RMM/PSA				
Additional Management	BootP/DHCP Client, SNMP v1/v2c, Cable Diagnostic, Ping, Traceroute				
MIB Support	RFC1213, RFC1493, RFC1757, RFC2674				

Hardware & Environmental	L8	L24	E8	E24	E48
Warranty	3 Year Advanced Replacement				
Mounting	Desktop, wall mount	Desktop, wall mount, rack mount (included)			
Power Supply	Internal Power Supply				
Power Cable	US/EU/UK/AU				
PoE Standard	IEEE 802.3at/af up to 30W per port				
SDRAM	256MB				
Flash Memory	32MB				
LED Indicators	Power, Fault, PoE Max, LAN Mode, PoE Mode, Link/Act	Power, Fault, PoE Max, LAN Mode, PoE Mode, Speed, Link/Act			
Dimensions	238.8mm x 104.1mm x 279mm (9.4" x 4.1" x 1.1")	439.4mm x 256.5mm x 43.2mm (17.3" x 10.1" x 1.7")	330.2mm x 228.6mm x 43.2mm (13" x 9" x 1.7")	439.4mm x 309.9mm x 43.2mm (17.3" x 12.2" x 1.7")	439.4mm x 408.9mm x 43.2mm (17.3" x 16.1" x 1.7")
Weight	1.37 lbs.	7.65 lbs.	4.48 lbs.	8.45 lbs.	13.8 lbs.
Operating Temperature	0° to 40°C (32° to 104°F)	0°C to 50°C (32° to 122°F)			
Storage Temperature	-20°C to 70°C (-4° to 158°F)		-40°C to 70°C (-40° to 158°F)		
Humidity	5 to 95% non-condensing				

Datto Networking Appliance

The Datto Networking Appliance solves one of the most important networking problems SMBs face today: Keeping the Internet up and running even if the primary Internet connection goes down. And let's face it. This happens all of the time, especially if your business is relying on a local cable company to deliver its Internet.

The Datto Networking Appliance delivers fully integrated 4G LTE failover for when the main Internet connection goes down. And we do this without requiring a contract with the wireless carrier. And we don't track your data usage. We simply keep your Internet up so that you can continue to work.

But There's More

Solving the always connected Internet problem is big. But we're not satisfied with just that. That's why we built the Datto Networking Appliance to deliver a built-in edge router, 802.11ac WiFi, stateful firewall, Intrusion Detection and Prevention, robust VPN capabilities and more. You see, we built the appliance to be all-in-one networking so that your MSP can deliver powerful networking to you in a single compact device.

Built for Performance

The Datto Networking Appliance incorporates an eight core 2.4GHz Intel processor, 8GB DDR3, 32 GB Industrial Compact Flash drive, six built-in 10/100/1000 Ethernet Ports and fully integrated, multi-band, Cat4 Radio. This is one souped up hardware appliance. And that souped up hardware delivers throughput up to 1.7 Gbps, performing up to 300% faster than other comparable models in the market. When your MSP installs the Datto Networking Appliance, you can count on its performance.



Datto Networking Appliance

Features

RMM/PSA Integration

IPv4

Layer 7 Traffic Management

Hosted VoIP Support

Supports up to 8 VLANS

APT Blocker

Network Discovery

PPPoE

Port Aggregation

Traffic Shaping

Firewall

Stateful Packet Inspection

Port Forwarding

1:1 NAT

1:Many NAT

DMZ Host

Layer 7 DPI

Security

Intrusion Detection System

Intrusion Prevention System

Port Scanning

Signature-based Rule Files

Web Filtering

Whitelisting

Ad Blocker

Failover

Bundled 4G LTE Service

No Carrier Contract Required

No Charges for Overages

WAN Failover

Hardware

8 Core 2.4GHz Intel Processor

8 GB DDR3 RAM

32 GB Industrial Compact Flash Hard Drive

6 Built-in 10/100/1000 Ethernet Ports
- 2 Dedicated WAN Ports, 4 Configurable VLAN Ports

3x3 MIMO 802.11 AC WiFi 2.4/5GHz

Fully Integrated Multi-band Cat4 Radio (LTE)

VPN Support

SSL (Open VPN)

IKEv2

IPSec

Hub & Spoke (multi-router)

Performance

250,000 Concurrent Connections

1.7 Gbps Firewall Throughput (1,518 Packet Size)

661 Mbps IPS Throughput (372 Packet Size)

569 Mbps DPI Throughput (372 Packet Size)

730 Mbps IMIX Throughput (372 Packet Size)*

*IMIX (or Internet Mix) is a metric stimulating Internet traffic flowing through various networking equipment, and is intended to represent how Internet traffic would flow in real world conditions.

Environmental

0° to 40°C (32° to 104°F)
Operating Temperature

Dimensions: 231mm x 197mm x 44mm
(9.09" x 7.76" x 1.73")

Management & Warranty

Cloud Management: dna.datto.com

3 Year Advanced Replacement Warranty

WITH THE REDUNDANT SYSTEMS IN PLACE [DATTO NETWORKING APPLIANCE], IF WE HAVE ANY SYSTEM THAT GOES DOWN, THERE'S A BACKUP SO THAT WE DON'T LOSE PRODUCTIVITY. UPTIME IS A BIG ADVANTAGE FOR US."

Craig Scholte
President & Owner,
Griffin Transportation



For more information please contact:

Destek Inc.

Phone: (519) 938-8966

L9W5B6